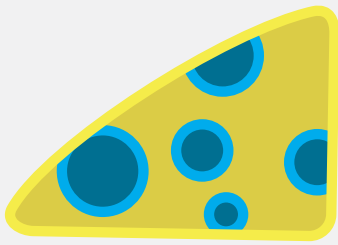


FDA FOOD RECALL EARLY ALERT



81 Days Until Recall 9 Illnesses in 6 States

Illnesses Include: 1 Infant Death, 2 Fetal Losses

July 28, 2014

Virginia Department of Agriculture and Consumer Services (VDACS) notified FDA that it discovered *Listeria monocytogenes (Lm)* in one of the firm's cheese products, expiration date of September 27, 2014; the *Lm* found by VDACS was linked to *Lm* found in samples from ill persons. On July 31, the firm voluntarily recalled this cheese product with this expiration date.



Linked Illness[‡]

09/13/2013

Infant Death Linked to Illness

06/25/2014

Linked Illness

07/28/2014

August 1 – 22, 2014

FDA conducted an inspection at the firm's facility and collected environmental samples.



Linked Illness

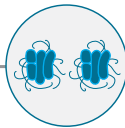
08/13/2014

Fetal Loss* Linked to Illness

08/15/2014

August 22, 2014

FDA discovered *Lm* in environmental samples from the firm's facility; the *Lm* found by FDA was "indistinguishable" from the *Lm* found by VDACS.



August 28, 2014

FDA followed up with request for status of firm's intention to clean facility.



September 11, 2014

In response to FDA's August 28 request, FDA received a brief response that "lacked significant supporting documentation."



September 24, 2014

FDA was notified that the firm's private lab verbally reported *Lm* found in cheese samples. On October 6, the firm voluntarily conducted a local recall of another cheese product with best by dates of October 1, 2014, to October 8, 2014, and October 18, 2014.



Sept. 24 – Oct. 1, 2014

Firm distributed 3,332 potentially adulterated units.

October 7, 2014

FDA began followup inspection, again revealing the presence of *Lm*.



Linked Illness

10/08/2014

Fetal Loss* Linked to Illness

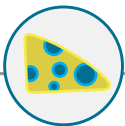
10/11/2014

Linked Illness

10/13/2014

October 17, 2014

Firm voluntarily recalled all potentially adulterated cheese products with best by dates of July 1, 2014, to December 31, 2014.



Linked Illness

11/15/2014

81 Days Until Recall

July 28, 2014 – Oct. 17, 2014

9 Illnesses in 6 States

Illnesses Include: 1 Infant Death, 2 Fetal Losses*

* According to FDA records, CDC linked two fetal losses to these illnesses.

‡ "Linked illness" represents the illness onset date for a person whose illness was linked to the firm's product.

Source of Information: FDA recall files

Report: <http://oig.hhs.gov/oas/reports/region1/11501500.asp>



U.S. DEPARTMENT OF HEALTH & HUMAN SERVICES
OFFICE OF INSPECTOR GENERAL

